



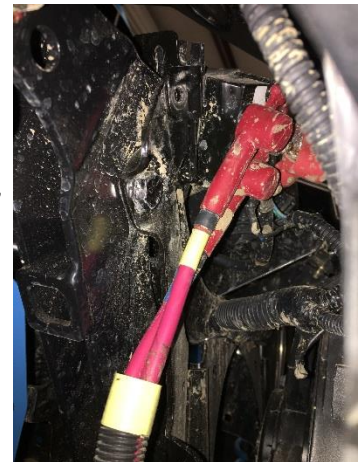
Part# 131201X

Can-Am Maverick Stubby Bumper



Installation Instructions

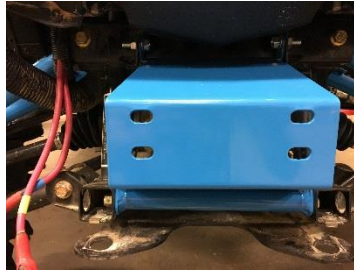
1. Remove factory bumper.
2. If vehicle has a factory installed winch wiring locate the solenoid box under the hood on passenger side then remove it from frame and reinstall the bolt. (if not factory installed then move to step 4)
3. Pull a little slack in the cables and remove the mounting bracket, rotate 180 degrees and reattach it. There is an unused tab behind radiator on passenger side to attach bracket to using supplied 5/16" x 3/4" bolt, nut, and flat washer.



4. Before mounting the bumper install the roller fairlead (this bumper is designed for the bigger fairlead) and winch (if using the factory installed winch replace the beveled head bolts with supplied 8mm x 16mm bolts, lock washer, flat washer).



5. First install the one piece frame bracket using the factory lower bolt and supplied upper 3/8" x 1" bolts, flat washer, nuts. Tighten all bolts.



6. Install the bumper using supplied flat washers and nuts and use supplied 6mm x 1.25" bolts, lock and flat washers to replace factory skid plate bolts. Adjust bumper and tighten skid plate bolts first then frame mount bolts.



7. Install wiring to winch and enjoy.



Proudly Made In America

Technical Questions (903) 935-1980